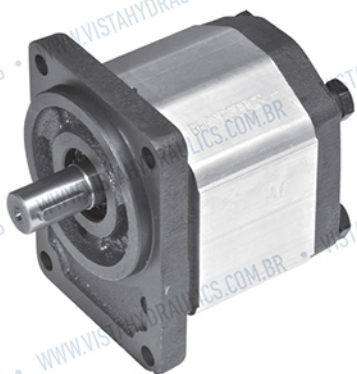


Bomba de Engrenagens

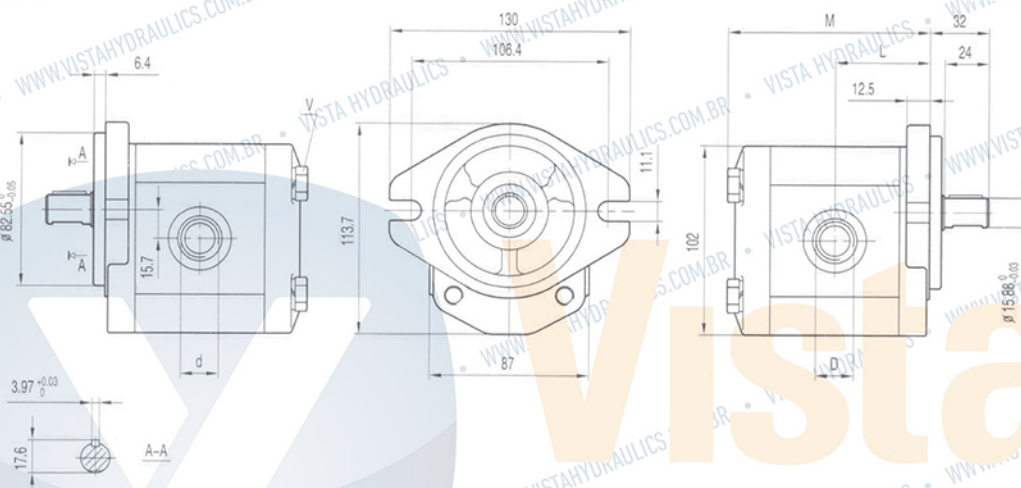
Séries 2 - BHP2



Material da flange de montagem	V - Torque de Aperto do Parafuso
Alumínio	40 ~ 45
Aço	70 ~ 75

Saída

Entrada



Especificações

Modelo	Deslocamento (cm ³ /rev)	Pressão Máxima (bar)			Velocidade Máx. (r/min)	Velocidade Mín. (r/min)	Dimensões (mm)			
		P1	P2	P3			M	L	D	d
BHP2**-D-3	3	270	285	300	4000	800	91,1	43,6	1 1/16-12UNF	7/8-14UNF
BHP2**-D-4	4	270	285	300	4000	600	92,7	44,4	1 1/16-12UNF	7/8-14UNF
BHP2**-D-6	6	270	285	300	4000	600	96	46	1 1/16-12UNF	7/8-14UNF
BHP2**-D-8	8	270	285	300	3500	500	99,3	47,7	1 1/16-12UNF	7/8-14UNF
BHP2**-D-10	10	270	285	300	3000	500	102,6	49,3	1 1/16-12UNF	7/8-14UNF
BHP2**-D-12	12	270	285	300	3000	500	105,9	51	1 1/16-12UNF	7/8-14UNF
BHP2**-D-14	14	250	265	280	4000	500	109,3	52,7	1 1/16-12UNF	7/8-14UNF
BHP2**-D-16	16	250	265	280	4000	500	112,7	54,4	1 1/16-12UNF	7/8-14UNF
BHP2**-D-18	18	250	265	280	3600	400	116	56	1 1/16-12UNF	7/8-14UNF
BHP2**-D-20	20	220	235	250	3200	400	119,3	57,7	1 1/16-12UNF	7/8-14UNF
BHP2**-D-22	22	220	235	250	3000	400	122,6	59,3	1 1/16-12UNF	7/8-14UNF
BHP2**-D-25	25	200	215	230	3000	400	127,6	61,8	1 1/16-12UNF	7/8-14UNF
BHP2**-D-28	28	180	190	200	2500	400	132,6	64,3	1 1/16-12UNF	7/8-14UNF
BHP2**-D-30	30	160	170	180	2500	400	135,9	66	1 5/16-12UNF	7/8-14UNF

Solicite pelo código

BH	P	2	Tampa Dianteira	Sentido de Rotação	Tamanho	Tipo de Eixo	Pórticos	Posição dos Pórticos	Selagem	Opções
1	2	3	4	5	6	7	8	9	10	11

1. Modelo

BH - Tampa dianteira e traseira em aço (suporta 30 bar a mais de pressão que a BA)

2. Bomba

3. Série

2

4. Tampa Dianteira

A0, B0, B2, Q0, Q1 e Q2

5. Rotação

D - Sentido horário
S - Sentido anti-horário
R - Reversível

6. Tamanho

3, 4, 6, 8, 10, 12, 14, 16, 18, 20, 22, 25, 28, 30

7. Tipo de Eixo

Conferir nas páginas a seguir

8. Pórticos

Conferir nas páginas a seguir

9. Posição dos Pórticos

Omitir - Entrada e saída lateral
B - Entrada traseira e saída frontal
C - Entrada traseira e saída lateral
D - Entrada lateral e saída frontal
R - Entrada e saída traseira

10. Selagem

Omitir - Entre -10 °C e +80 °C, pressão máxima de entrada de até 3 bar absolutos.

V - Versão apropriada para fluidos em alta temperatura (-10 °C ~ +120 °C)

H - Versão apropriada para fluidos em baixa temperatura (-40 °C ~ +80 °C)

T - Versão apropriada para pressão máxima de entrada de até 3 e 6 bar absolutos

N - Versão apropriada para pressão máxima de entrada de 3 e 10 bar absolutos

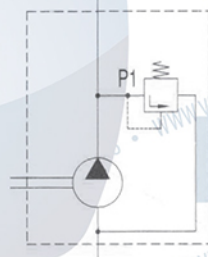
11. Opções

Y - 180xx

Válvula de alívio de pressão.

Descarga retorna para a sucção.

P1 = 5 ~ 250 bar



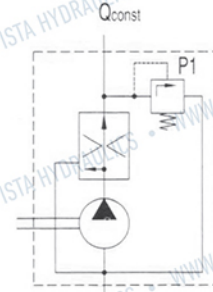
F - 15015

Válvula de controle de vazão 3 vias com válvula de alívio de pressão.

A vazão excessiva retorna para a sucção.

P1 = 100 ~ 180 bar

Qconst = 2 ~ 30 l/min

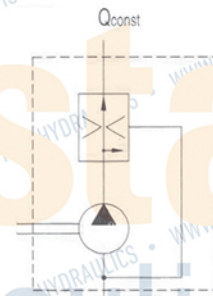


Q - xxx15

Válvula de controle de vazão 3 vias.

A vazão excessiva retorna para a sucção.

Qconst = 2 ~ 30 l/min



Exemplo

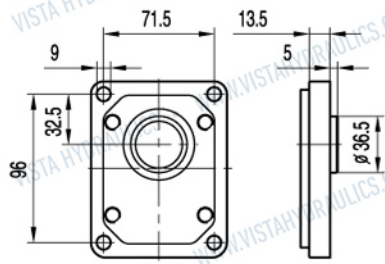
BHP2-B0-D-3-T0-E0 = Rotação sentido horário, 3cc/rev, tampa dianteira B0, 1:8 eixo cônico (T0), pórticos tipo E0, selagem padrão

BAP2-A0-D-3-C0-U0 = Rotação sentido horário, 3cc/rev, tampa dianteira A0, eixo paralelo (C0), pórticos tipo U0, selagem padrão

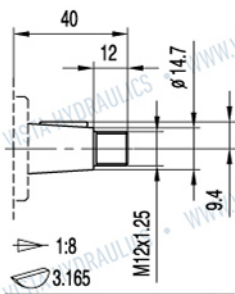
BHP2-Q0-D-3-T1-F0-N = Rotação sentido horário, 3cc/rev, tampa dianteira Q0, 1:8 eixo cônico (T0), pórticos tipo F0, selagem par alta pressão (N)

Tampa Dianteira

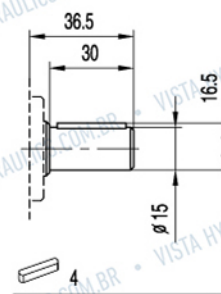
Eixos



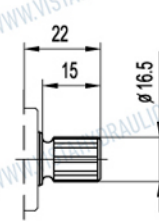
B0



T0



C4

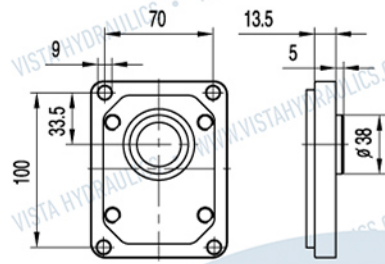


S7

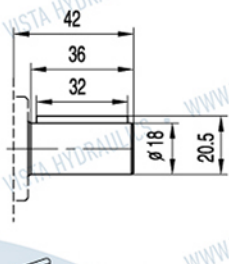
Torque Máximo
200 Nm

Torque Máximo
135 Nm

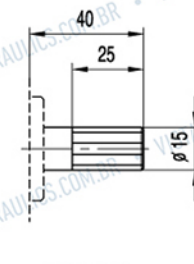
Torque Máximo
150 Nm



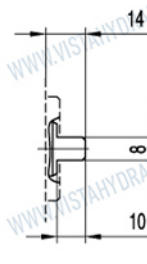
B1



C2



H0

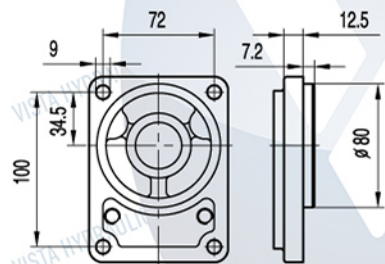


G0

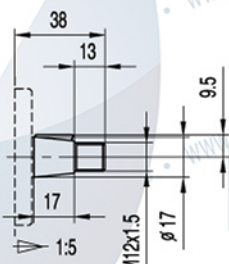
Torque Máximo
150 Nm

Torque Máximo
185 Nm

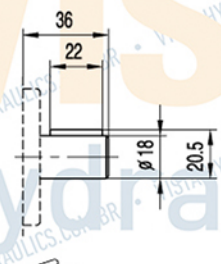
Torque Máximo
100 Nm



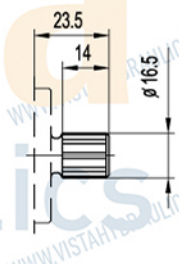
B2



T1



C3

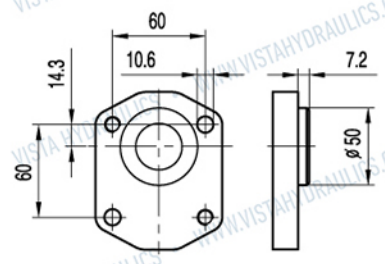


S6

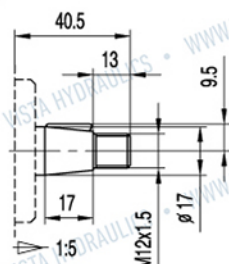
Torque Máximo
180 Nm

Torque Máximo
150 Nm

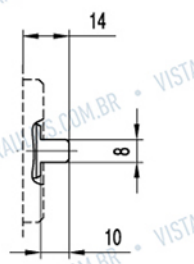
Torque Máximo
150 Nm



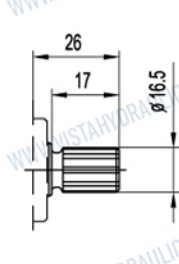
Q0



T1



G0



S3

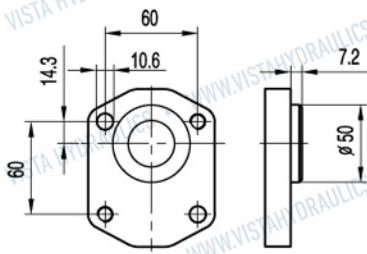
Torque Máximo
180 Nm

Torque Máximo
100 Nm

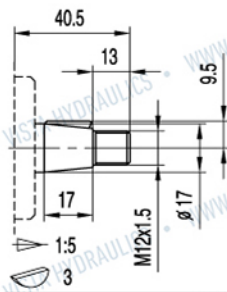
Torque Máximo
150 Nm

Tampa Dianteira

Eixos

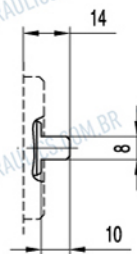


Q1



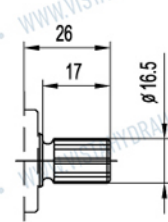
T1

Torque Máximo
180 Nm



G0

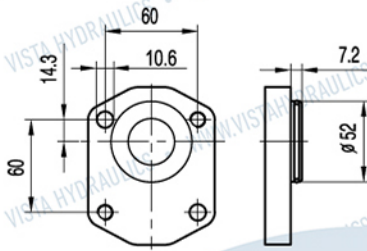
Torque Máximo
100 Nm



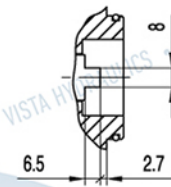
S3

DIN5482 B17X14

Torque Máximo
150 Nm

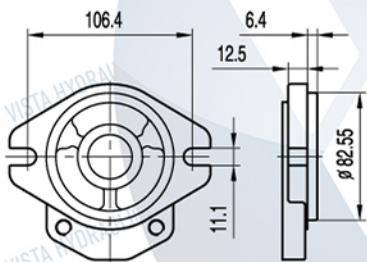


Q2

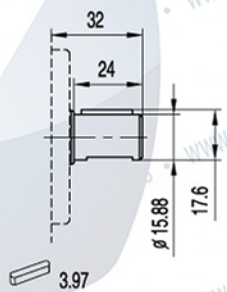


G1

Torque Máximo
100 Nm

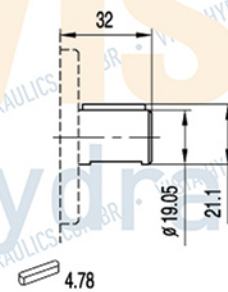


A0



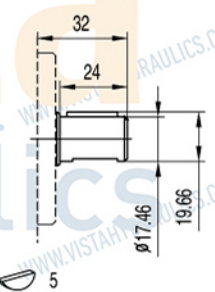
C0

Torque Máximo
140 Nm



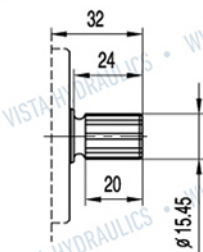
C1

Torque Máximo
160 Nm



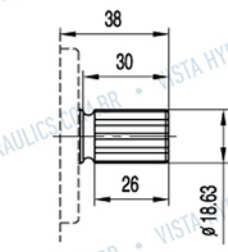
C6

Torque Máximo
180 Nm



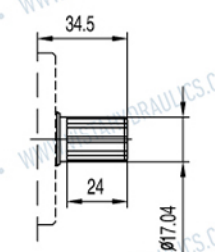
S0

Torque Máximo
185 Nm



S1

Torque Máximo
200 Nm



S8

Torque Máximo
190 Nm

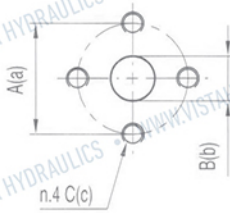
DP16/32-30° -9T

DP16/32-30° -11T

DP16/32-30° -10T

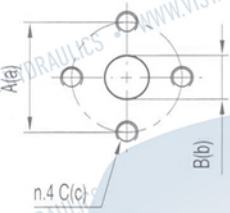
Pórticos

E0/E1/E2



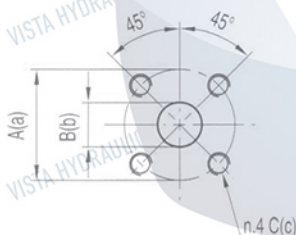
Modelo	Código dos Pórticos	Entrada			Saída		
		A	B	A	a	b	a
BA(H)P2...3 ~ BA(H)P2...8	E0	30	13	M6	30	13	M6
BA(H)P2...10 ~ BA(H)P2...22	E1	40	20	M8	30	13	M6
BA(H)P2...25 ~ BA(H)P2...30	E2	40	22	M6	30	13	M6

E3



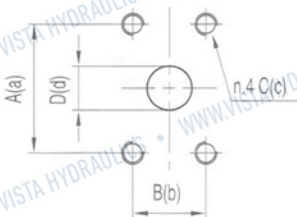
Modelo	Entrada			Saída		
	A	B	A	a	b	a
BA(H)P2...3 ~ BA(H)P2...8	38	14	M8	38	10	M8
BA(H)P2...10 ~ BA(H)P2...22	38	18	M8	38	15	M8
BA(H)P2...25 ~ BA(H)P2...30	38	20	M8	38	15	M8

F0/F1



Modelo	Código dos Pórticos	Entrada			Saída		
		A	B	A	a	b	a
BA(H)P2...3 ~ BA(H)P2...8	F0	40	15	M6	35	13	M6
BA(H)P2...10 ~ BA(H)P2...30	F1	40	20	M8	35	13	M6

F2/F3/F4



Modelo	Cód. dos Pórticos	Entrada				Saída			
		A	B	C	D	a	b	c	D
BA(H)P2...3 ~ BA(H)P2...16	F2	38,1	17,48	5/16-18UNC	13	38,1	17,48	5/16-18UNC	13
BA(H)P2...18 ~ BA(H)P2...20	F3	47,63	22,23	3/8-16UNC	20	38,1	17,48	5/16-18UNC	13
BA(H)P2...22 ~ BA(H)P2...30	F4	47,63	22,23	3/8-16UNC	20	47,63	22,23	3/8-16UNC	20

Pórticos

L0/L1/L2/L3/L4



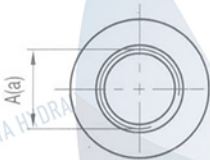
Modelo	Código dos Pórticos	Entrada A	Saída a
BHP2	L0	G 1/2	G 1/2
BHP2	L1	G 3/4	G 1/2
BHP2	L2	G 3/8	G 3/8
BHP2	L3	G 1	G 3/4
BHP2	L4	G 3/4	G 3/4

R0/R1/R2/R3/R4



Modelo	Código dos Pórticos	Entrada A	Saída a
BHP2	R0	NPT 1/2	NPT 1/2
BHP2	R1	NPT 3/4	NPT 1/2
BHP2	R2	NPT 1	NPT 3/4
BHP2	R3	NPT 1/2	NPT 1/2
BHP2	R4	NPT 3/4	NPT 3/4

U0/U1/U2/U3/U4/U5/U6/U7/U8



Modelo	Código dos Pórticos	Entrada A	Saída a
BHP2	U0	1 1/16-12 UNF	7/8-14 UNF
BHP2	U1	1 5/16-12 UNF	7/8-14 UNF
BHP2	U2	7/8-14 UNF	3/4-16 UNF
BHP2	U3	1 5/16-12 UNF	1 1/16-12 UNF
BHP2	U4	7/8-14 UNF	7/8-14 UNF
BHP2	U5	1 5/16-12 UNF	3/4-16 UNF
BHP2	U6	3/4-16 UNF	3/4-16 UNF
BHP2	U7	1 1/16-12 UNF	1 1/16-12 UNF
BHP2	U8	1 5/16-12 UNF	1 5/16-12 UNF

N0

Modelo	Código dos Pórticos	Entrada A	Saída a
BHP2	N0	3/4 - 14 NPT	3/4 - 14 NPT