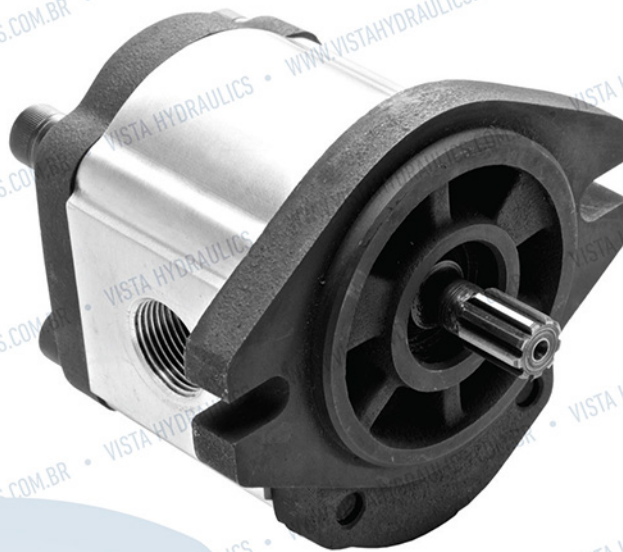


Bomba de Engrenagens

Série 2APF ** *** ***



Características

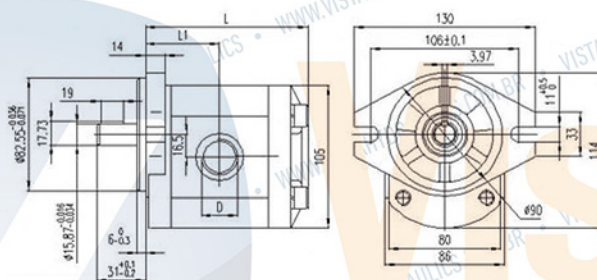
- Deslocamento de 4 até 30 cm³/r
- Pressão nominal 200 bar
- Pressão máxima 250 bar
- Baixo nível de ruído

Vista Hydraulics

Série 2APF ** *** ***

Especificações

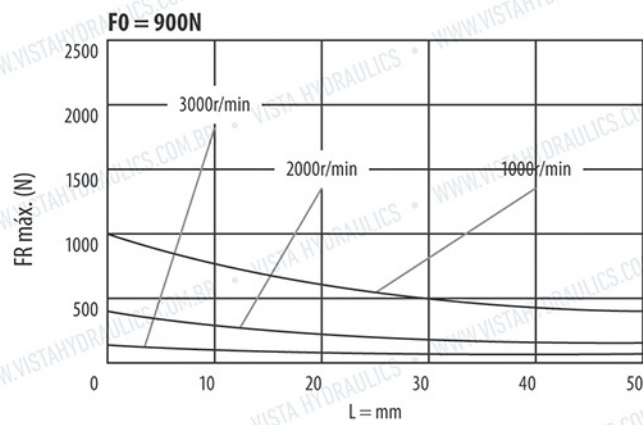
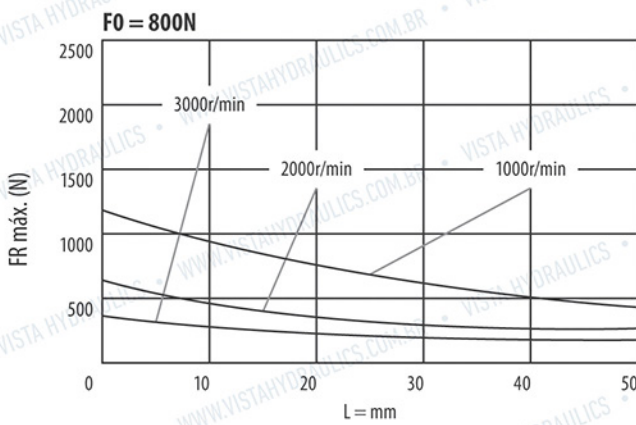
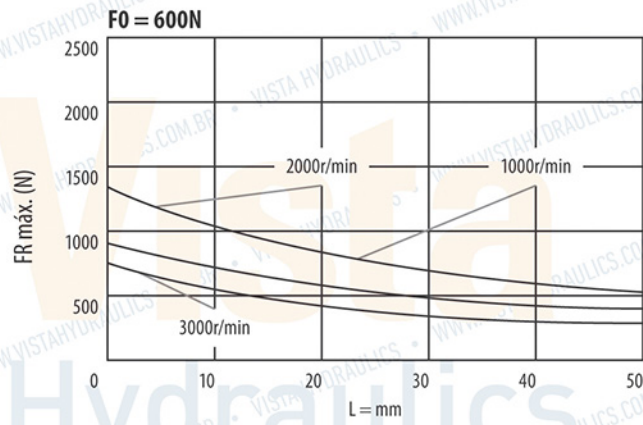
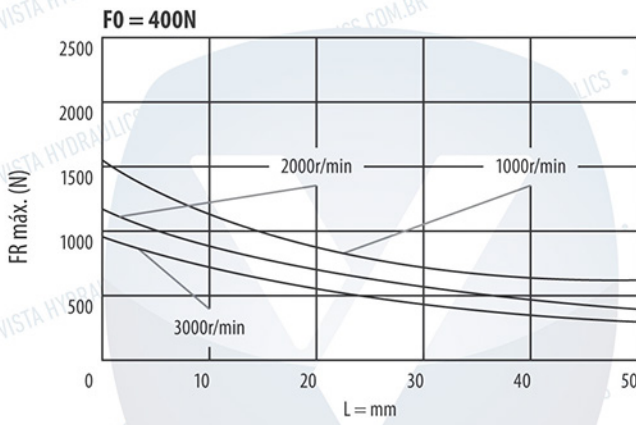
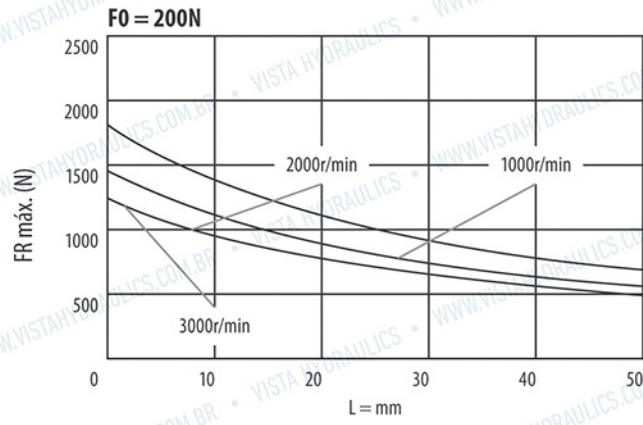
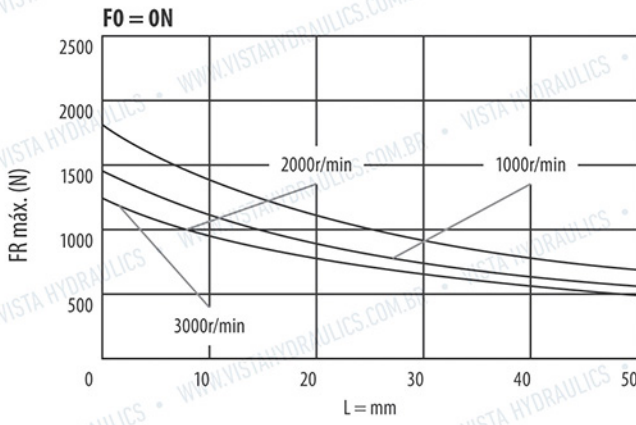
Modelo	Deslocamento (ml/r)	Pressão (bar)		Velocidade (r/min)			L (mm)	L1 (mm)	D	
		Nominal	Máx.	Nom.	Máx.	Mín.			Entrada	Saída
2APF4 *** **	4	200	250	2000	3500	500	96	44	PT 1/2	PT 1/2
2APF6 *** **	6	200	250	2000	3500	500	98	45	PT 1/2	PT 1/2
2APF8 *** **	8	200	250	2000	3500	500	102	47	PT 1/2	PT 1/2
2APF10 *** **	10	200	250	2000	3500	500	104	48	PT 1/2	PT 1/2
2APF12 *** **	12	200	250	2000	3500	500	108	50	PT 1/2	PT 1/2
2APF16 *** **	16	200	250	2000	3500	500	114	53	PT 3/4	PT 1/2
2APF18 *** **	18	200	250	2000	3500	500	117	55	PT 3/4	PT 1/2
2APF23 *** **	23	200	250	2000	3500	500	123	58	PT 3/4	PT 1/2
2APF25 *** **	25	200	250	2000	3500	500	128	60	PT 3/4	PT 1/2
2APF28 *** **	28	160	200	2000	3500	500	133	63	PT 3/4	PT 1/2
2APF30 *** **	30	160	200	2000	3500	500	136	64	PT 3/4	PT 1/2



Solicite pelo código

2	/A	P	F	**	***	***	/L
Série	Estrutura	Função	Faixa de Pressão	Deslocamento	Entrada/Saída	Eixo	Sentido de Rotação
2: Série 2		P: Bomba de Engranagens	F: 160 ~ 250 bar	Conferir na tabela acima	Conferir nas páginas a seguir	Conferir nas páginas a seguir	L - Esquerda Omitir: Direita

Carga admissível de mancal externo



Combinação das Roscas de Entrada e Saída

Código Entrada/Saída	Entrada T1	Saída T2	Nota
L00	G1	G1	ISO7-1:1994 Ângulo da rosca: 55° Cone: 0°
L01	G3/8	Furo com sulco de selagem	
L02	G1	G1/2	
L03	G1	G3/4	
L04	G1/2	G1/2	
L05	G1/2	G3/8	
L06	G1/4	G1/4	
L07	G1/4	Furo com sulco de selagem	
L08	G3/4	G1/2	
L11	G1-1/4	G1	
L44	G3/8	G1/4	
L46	G3/8	G3/8	

L12	M10X1	M10X1	ISO68-1:1998 ISO261:1998 ISO724:1993 ISO965-1:1998 Ângulo da rosca: 60° Cone: 0°
L13	M18X1,5	M14X1,5	
L14	M18X1,5	M18X1,5	
L15	M22X1,5	M18X1,5	
L16	M24X1,5	M24X1,5	
L17	M26X1,5	M18X1,5	
L18	M27X1,5	M18X1,5	
L19	M27X1,5	M22X1,5	
L20	M27X2	M22X1,5	
L21	M30X1,5	M22X1,5	
L22	M33X1,5	M27X1,5	
L23	M33X2	M18X1,5	
L24	M32X2	M22X1,5	
L25	M33X2	M27X2	
L26	M32X2	NPT 3/4	

L27	NPT 1-1/4	NPT 3/4	ASME B1.20.1-1983 Ângulo da rosca: 60° Cone: 1:16
L28	NPT 1	NPT 3/4	
L29	NPT 1/2	NPT 1/2	
L30	NPT 1/2	NPT 3/8	
L31	NPT 1/4	Furo com sulco de selagem	
L32	NPT 3/4	NPT 1/2	
L33	NPT 3/8	Furo com sulco de selagem	
L34	NPT 3/8	NPT 3/8	

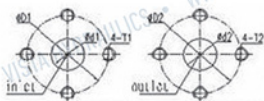
Combinação das Roscas de Entrada e Saída

Código Entrada/Saída	Entrada T1	Saída T2	Nota
L35	3/4-16 UNF-2B	9/16-18 UNF-2B	ASME B1.1:2003 Ângulo da rosca: 60° Cone: 0°
L36	7/8-14 UNF-2B	7/8-14 UNF-2B	
L37	7/8-14 UNF-2B	3/4-16 UNF-2B	
L38	7/8-14 UNF-2B	3/4-16 UNF-2B	
L39	1-1/16-12 UN-2B	7/8-14 UNF-2B	
L40	1-1/16-12 UN-2B	1-1/16-12 UN-2B	
L41	1-5/16-12 UN-2B	7/8-14 UNF-2B	
L41	1-5/16-12 UN-2B	1-1/16-12 UN-2B	
L43	PT 1	PT 3/4	
L09	PT 1/2	P 1/2	
L45	PT 1/2	PT 3/8	
L10	PT 3/4	PT 1/2	
L47	PT 3/8	Furo com sulco de selagem	
L48	RC 3/8 (PT 3/8)	RC 3/8 (PT 3/8)	
L49	G 3/4	G 3/4	
L50	3/4-16 UNF	5/8-16 UNF	
L96	1.1/4" SF "Deitado"	1.1/4" SF "Deitado"	

Combinação das Flanges de Entrada e Saída

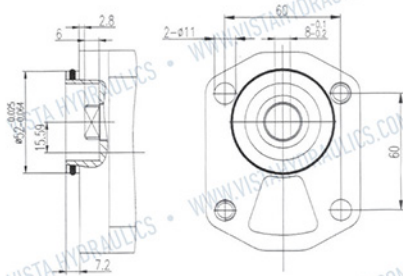


Código de Entrada/Saída	Entrada			Saída		
	ØD1	T1	Ød1	ØD2	T2	Ød2
F01	30	4-M6	12	30	4-M6	12
F09	35	4-M6	15	35	4-M6	15
F52	40	4-M6	20	35	4-M6	15

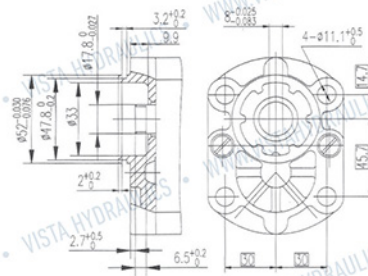


Código de Entrada/Saída	Entrada			Saída		
	ØD1	T1	Ød1	ØD2	T2	Ød2
F02	30	4-M6	13	30	4-M6	13
F03	38	4-M8	18	38	4-M8	15
F04	40	4-M6	20	35	4-M6	15
F05	40	4-M6	20	35	4-M6	15
F06	40	4-M8	20	30	4-M6	13
F07	50	4-M8	20	50	4-M8	20
F08	50	4-M8	22	50	4-M8	18

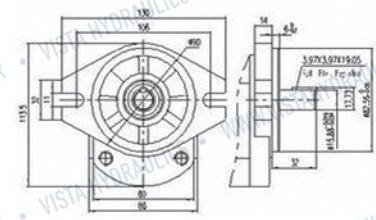
B09



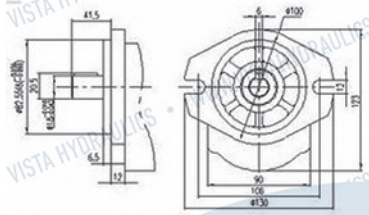
B11



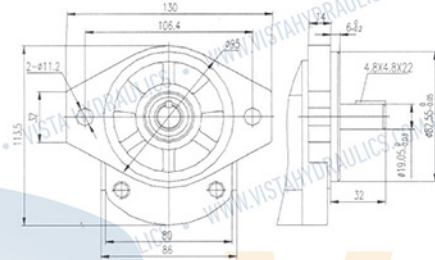
P02



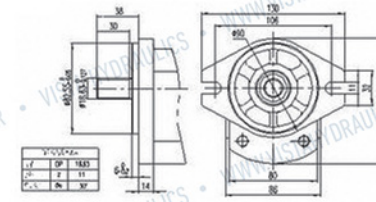
P06



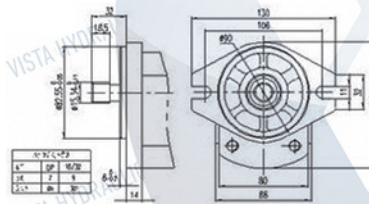
P21



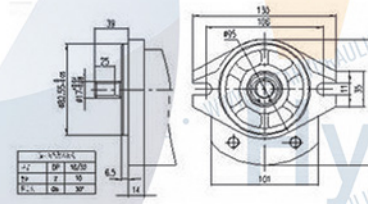
S02



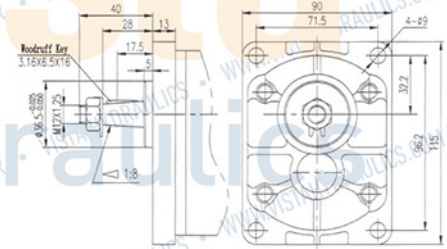
S03



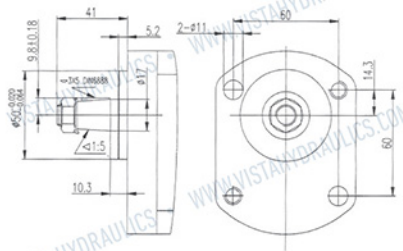
S04



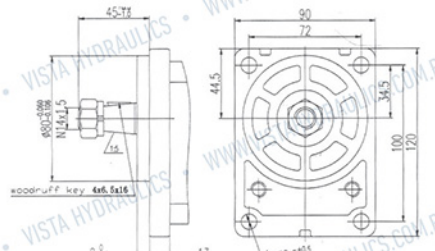
Z03



Z11



Z18



Z22

